

**39 BROADWAY**

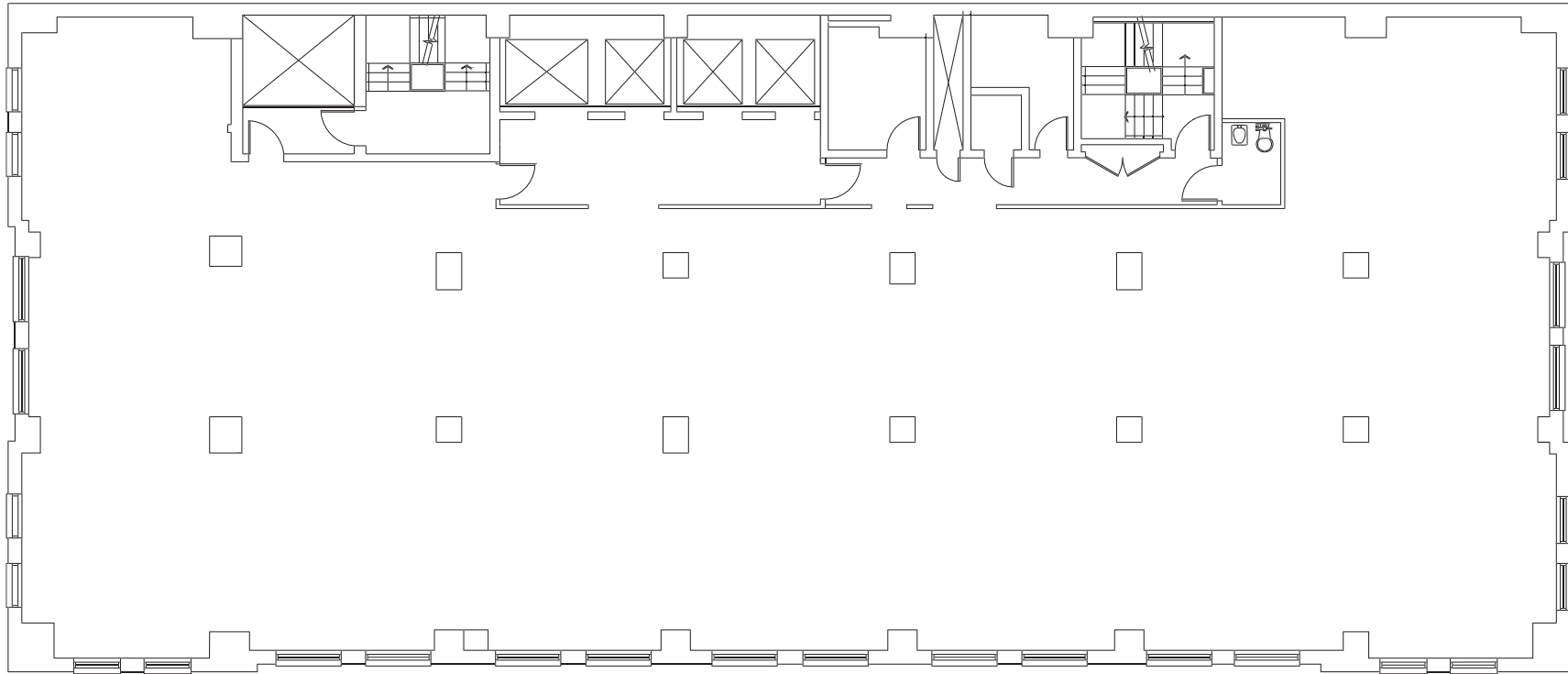
**26th Floor**

**8,280 SF**

**CORE AND SHELL**

TRINITY

BROADWAY



Water Views 	Walking distance to public transportation 
11' 6" Slab to Slab 	Iconic Downtown District 

212-284-3756

[www.cammebys.com](http://www.cammebys.com)

**Cammeby's**