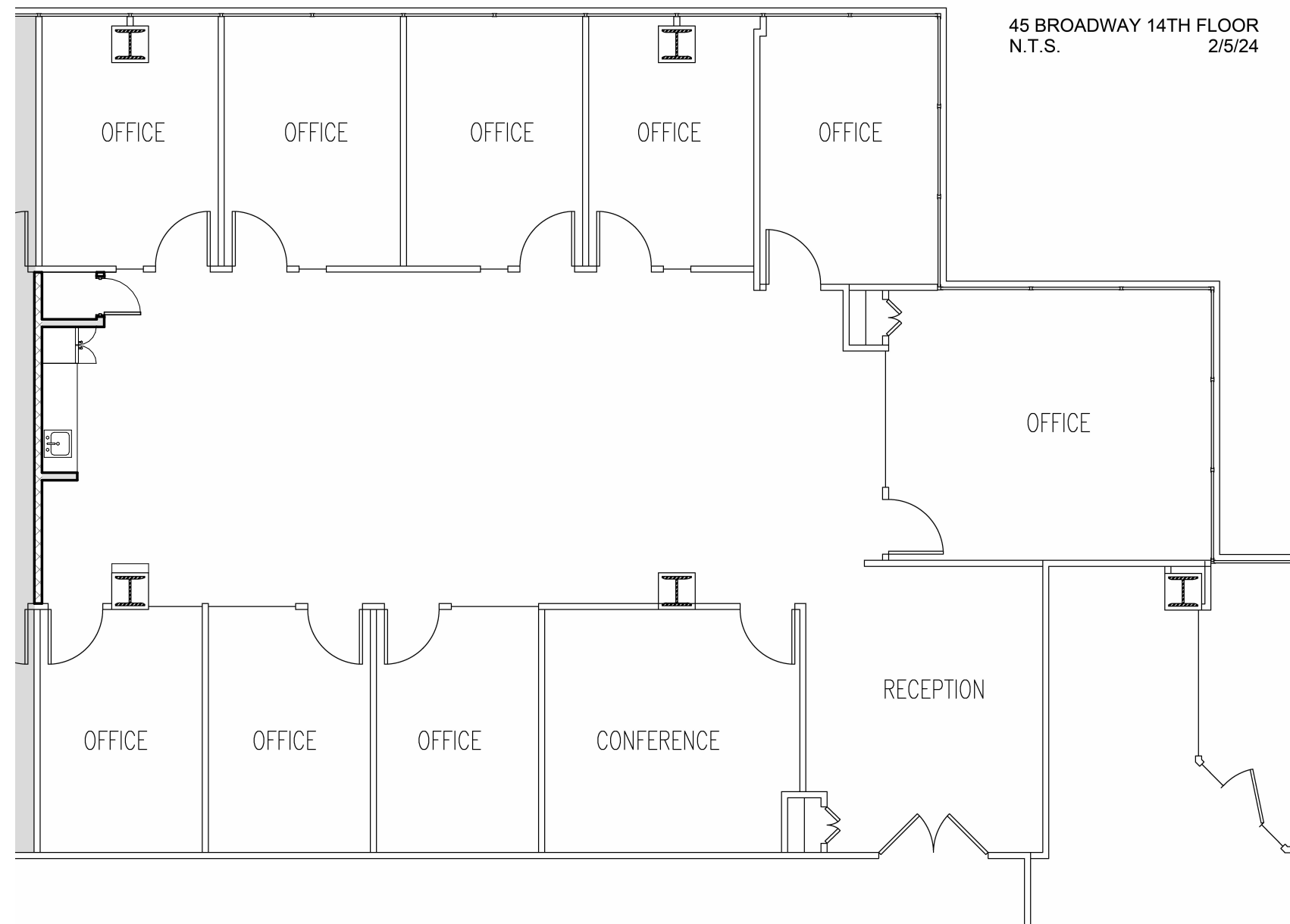


SHADED AREA INDICATES "INITIAL SURRENDER SPACE"



# 45 BROADWAY

## 14TH FLOOR-PORITION

3,988 RSF

(212) 284-3756

[www.cammebys.com](http://www.cammebys.com)

Note: Plans for illustrative use only. Architectural details subject to final review. Furniture, appliances, and millwork to be provided by tenant.